

## Tri-axial ATD piezo-resistive accelerometer



### Features

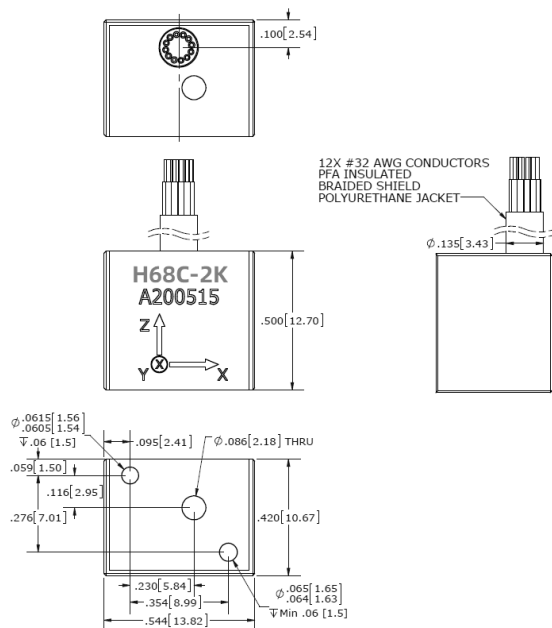
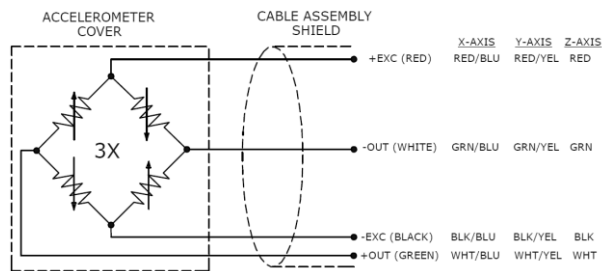
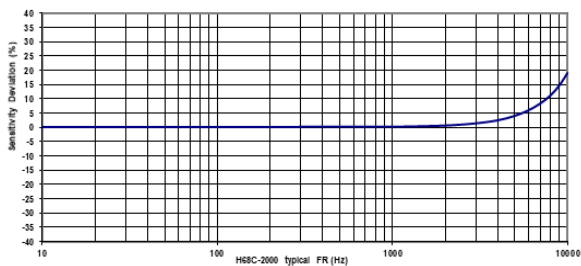
- SAE J211 comply
- DC response
- Miniature tri-axial
- Shock, low & high frequency
- 10K g shock survivability
- 2-10Vdc Excitation
- Integrated 1 to 3 cable

### Application

- Auto crash test
- Shock test
- Anthropomorphic dummy

### Description

Model **H68C** is a miniature triaxial accelerometer designed for crash testing and ATD applications that require minimal mass weight and a wide frequency response. The accelerometer meets SAE J211 specifications for instrumentation for impact testing and SAE-J2570 specification for Andromorphic Test Device (ATD) transducers. It is available in different acceleration ranges, 500 g and 2000 g full scale. The tri-axial accelerometer is based on a latest piezo-resistive MEMS sensing element, which offers exceptional dynamic range and stability. This unit features the full bridge output configuration with a compensated temperature range from 0 to +50° C. Model **H68C** accelerometer has a standard transverse sensitivity accuracy of <3%. Advance MEMS structure provides outstanding shock survivability, a flat amplitude and phase response up to 7kHz.



## Specification

All values are typical at +24°C (+75°F), 100Hz, and 10Vdc excitation unless otherwise stated.

DASH No.	-05K	-2K	Units
Dynamic Range	±500	±2000	g
Sensitivity	0.4	0.15	mV/g
Frequency Response ±5% (Z-axial)	0-4000	0-4000	Hz
Frequency Response ±5% (X/Y-axial)	0-3000	0-3000	Hz
Frequency Response ±1dB	0-4200	0-7000	Hz
Phase Response ±5°	0-1000	0-2000	Hz
Resonant Frequency	15000	26000	Hz
Damping Ratio	0.3	0.05	
Shock Limit	10000	10000	g

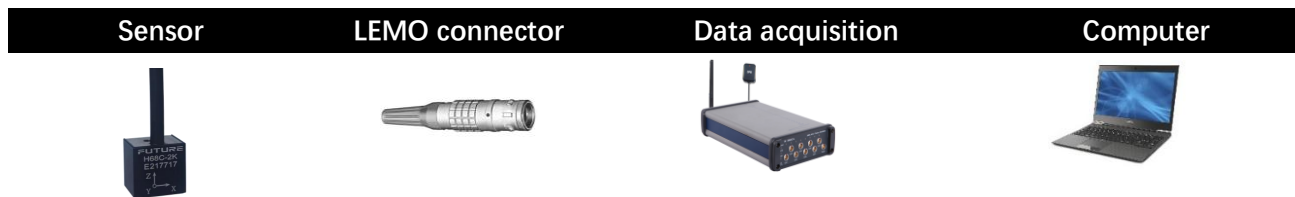
PARAMETERS	VALUE	UNITS
Zero Acceleration Output	<±50	mV
Transverse Sensitivity (<1% by option)	<3	%
Non-Linearity	±1	%Reading
Thermal Zero Shift, 0-50°C (32-122°F)	±0.05 (±0.03)	%FSO/°C (%FSO/°F)
Thermal Sensitivity Shift, 0-50°C (32-122°F)	±0.1 (±0.06)	%/°C (%/°F)
Excitation Voltage	2 to 10	Vdc
Insulation Resistance (@100Vdc)	>100	MΩ
Input Impedance	2400 to 5000	Ω
Output Impedance	2400 to 5000	Ω
Operating Temperature	-20 to +85 (-4 to +185)	°C (°F)
Humidity	Epoxy Sealed	
Weight (Cable Not Included)	9	Grams
Mounting Torque	3 (0.3)	lb-in (Nm)

## Accessories

Calibration certificate included.

Part Number	Description	Availability
PM0517	M2x16 socket head cap screws	Included
PJ0048	LEMO FGG-1B-307 connector	Optional
IN-01	Bridge piezo-resistive signal amplifier	Optional
IN-3062	8 channels data acquisition system	Optional

## Measurement configuration



## Ordering information

H68C	-	2K	-	8	C1
Model	-	Range	-	Cable length	Connector
H68C	-	0.5K=500g 2K=2000g	-	6=6 meters 8=8 meters 9=9 meters	C*=Connector options Blank=No Connector

## Connector options

C1	C2	C3	C4	Blank
LEMO FGG-1B-307 Dallas Chip: DS2401	LEMO FGG-1B-307	LEMO FGG-1B-307 Dallas Chip: DS2401	LEMO FGG-1B-307	Blank
Pin1=N/C Pin2=Dallas pin2 Pin3=+OUT (Green) Pin4=+EXC (Red) Pin5=-EXC (Black) Pin6=-OUT (White) Pin7=N/C Housing=Dallas pin1=Shield	Pin1=N/C Pin2=N/C Pin3=+OUT (Green) Pin4=+EXC (Red) Pin5=-EXC (Black) Pin6=-OUT (White) Pin7=N/C Housing=Shield	Pin1=N/C Pin2=Dallas pin2 Pin3=+OUT (Green) Pin4=+EXC (Red) Pin5=-EXC (Black) Pin6=-OUT (White) Pin7=Housing=Dallas pin1=Shield	Pin1=-OUT (White) Pin2=-EXC (Black) Pin3=+EXC (Red) Pin4=+OUT (Green) Pin5= N/C Pin6=N/C Pin7= N/C Housing=Shield	No connector



FUTURE reserves the right to make changes to any products or technology herein to improve reliability, function, or design. FUTURE does not assume any liability arising out of the application or use of any product or circuit described herein; neither does it convey any license under its patent rights nor the rights of others.